



TEAM NEO JERSEY D10307

CHARACTERISTICS

- Short sleeve.
- Form fitting.
- Low collar.
- Stretch fabric on the front, sides and sleeves.
- Ventilated mesh on the back.
- Hidden silicone at hem.
- 3 rear pockets.
- Concealed full-zip.

The Team Neo jersey, as its name suggests, Neo is the perfect jersey for newcomers in the cycling world. It suits the needs of your club new members wishing to start with quality and technical equipment.

PRICES ON REQUEST







TEAM JERSEY D10148

CHARACTERISTICS

- Short sleeves.
- Form fitting.
- Stretch fabric on the front, sides and sleeves.
- Ventilated mesh on the back.
- Silicone gripper at hem.
- 3 rear pockets.
- Concealed full-zip.

PRICES ON REQUEST



TEAM BIB SHORT D10149

CHARACTERISTICS

- Lycra bib short.
- Stretchable anatomic straps.
- Laser cut leg with silicone gripper.
- Printable inserts.
- Pad of choice.

PRICES ON REQUEST







TEAM WOMAN JERSEY D10152

CHARACTERISTICS

- Short sleeves.
- Form fitting.
- Stretch fabric on the front, sides and sleeves.
- Ventilated mesh on the back.
- Silicone gripper at hem.
- 3 rear pockets.
- Concealed full-zip.

PRICES ON REQUEST



TEAM WOMAN BIB SHORT D10153

CHARACTERISTICS

- Lycra bib short.
- Stretchable anatomic straps.
- Laser cut leg with silicone gripper.
- Printable inserts.
- Pad of choice.

PRICES ON REQUEST





TEAM FACTORY JERSEY D10308

CHARACTERISTICS

- Short sleeves.
- Form fitting.
- V collar.
- Stretch fabric on the front, sides and sleeves.
- Large G4 gripper 4,5cm at hem.
- 3 rear stretch pockets.
- Concealed full-zip.

PRICES ON REQUEST



TEAM FACTORY BIB SHORT D10310

CHARACTERISTICS

- Lycra bib short.
- Stretchable anatomic straps.
- Printable elastic 4,5cm.
- Printable inserts.
- Pad of choice.

PRICES ON REQUEST









PRO LUXE JERSEY D10431

CHARACTERISTICS

- Short sleeves.
- Luxor & SkinLycra ultra-soft fabrics.
- Form fitting.
- Low collar.
- Light & Aero fabrics.
- Large G4 4,5cm gripper at hem.
- 3 rear stretch pockets.
- Concealed full-zip.

PRICES ON REQUEST



PRO LUXE BIB SHORT D10311

CHARACTERISTICS

- Lycra bib short.
- Fabric structured laser compressor.
- Stretchable anatomic straps.
- Printable inserts.
- Laser cut G4 elastic 4,5cm.
- Transfer logo printed.
- Pro 100 HD pad.

PRICES ON REQUEST





PRO AERO JERSEY D10309

CHARACTERISTICS

- Short sleeve.
- Pro fitting.
- Small collar.
- Stretch fabric (front, back, sides and sleeves).
- Made in Light Aero fabric.
- Large G4 gripper 4,5cm at hem.
- 3 stretch rear pockets.
- Concealed full-zip.

PRICES ON REQUEST



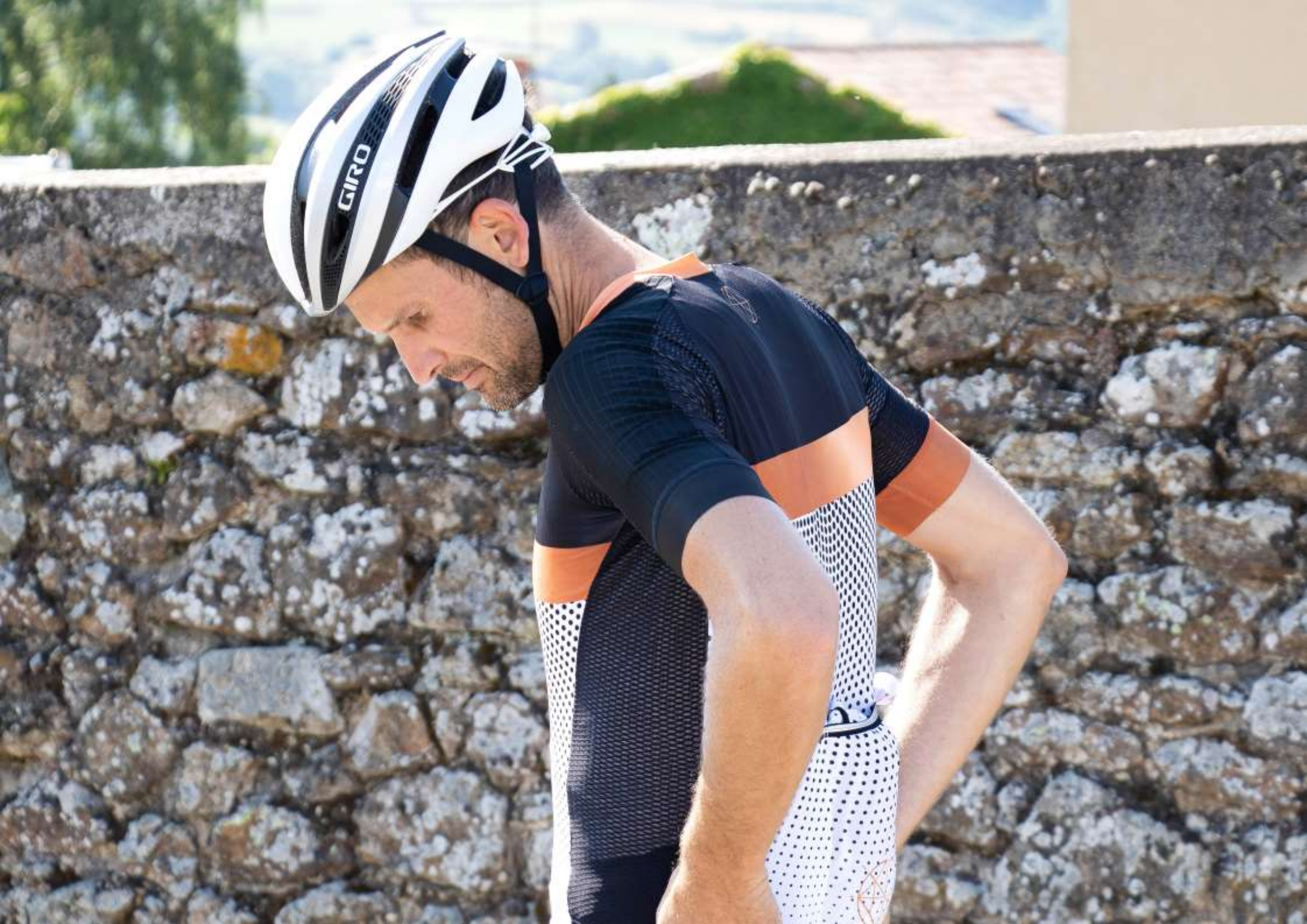
PRO AERO BIB SHORT D10151

CHARACTERISTICS

- Lycra bib short.
- Aero mesh and compressive fabric.
- Stretchable anatomic straps.
- Laser cut printable elastic 4,5cm.
- Side printable inserts.
- Pro 100 HD pad included.

PRICES ON REQUEST







PRO LIGHT JERSEY D10150

CHARACTERISTICS

- Short sleeve.
- Form fitting.
- Low collar.
- Light 3D mesh for hot summer.
- Stretch fabric on the front, sides and sleeves.
- Large G4 gripper 4,5cm at hem.
- 3 stretch rear pockets.
- Concealed full-zip.

The Pro Light jersey has an exceptional technicality. It's the ultimate piece to face high temperatures with a unique comfort and breathability. The fineness of the fabrics makes him the lightest jersey on the market.

PRICES ON REQUEST









TEAM LS JERSEY D10156

CHARACTERISTICS

- Long sleeves.
- Form fitting.
- Breathable Warm+ fabric.
- G4 gripper 4,5cm at hem.
- Vertical reflective piping.
- 3 rear pockets.
- Concealed full-zip.

PRICES ON REQUEST



PRO LS JERSEY D10380

CHARACTERISTICS

- Long sleeves.
- Form fitting.
- Windproof fabric.
- G4 gripper 4,5cm at hem.
- Vertical reflective piping.
- 3 rear pockets.
- Concealed full-zip.

PRICES ON REQUEST









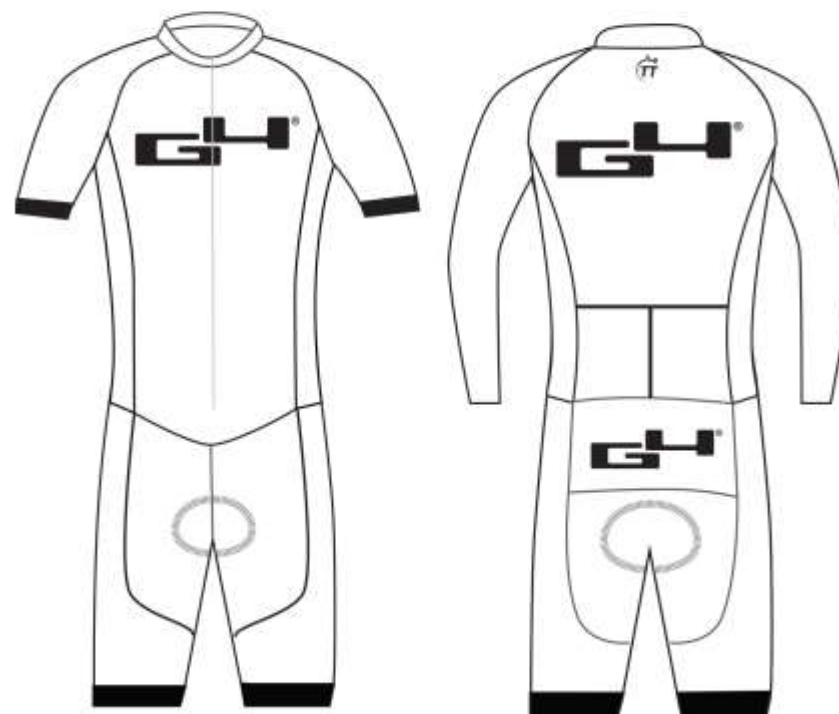
TEAM CYCLING SUIT D10160 & D10313

CHARACTERISTICS

- Breathable cycling suit.
- Lycra fabric.
- Long or short sleeves.
- 2 rear pockets.
- Silicone elastic hems.
- Pad of choice.

Our Team cycling suit is our entry-level, entry-level G4 is a product with a high level of technicality. Available in short and long sleeves it responds to current cycling trends.

PRICES ON REQUEST







PRO AERO BODY CYCLING SUIT D10312

CHARACTERISTICS

- One piece Aero body skinsuit.
- Breathable and aero mesh.
- Extended sleeves.
- Last technology fabrics.
- Comfortable and aero fit.
- Printable inserts.
- Pro 100 HD pad.
- 3 rear pockets.

The Aero Body Pro short sleeve cycling suit is ideal for cycling against the clock. Developed with the know-how of professional cyclists, it is the perfect association of comfort and technology.

PRICES ON REQUEST







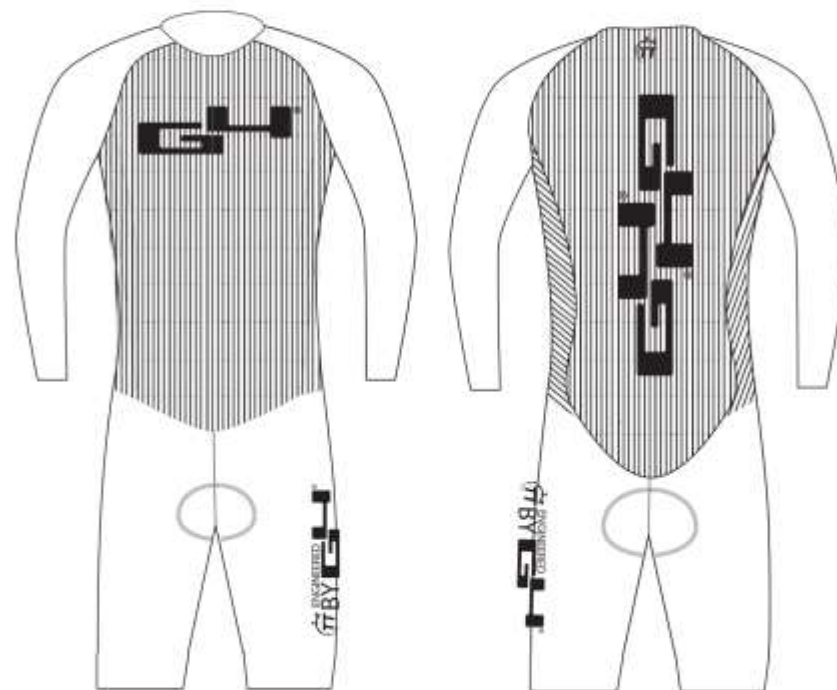
PRO AERO TT CYCLING SUIT D10159

CHARACTERISTICS

- Body time trial skinsuit.
- Last technology fabrics.
- Pro fitting.
- Breathable & aerodynamic BestSpeed fabric.
- Silicone elastic hems.
- Printable inserts.
- Concealed full-zip.
- Pro 100 HD pad included.

The Pro Aero TT cycling suit is the ultimate time trial skinsuit. Developed for unique aerodynamics this outfit is the ultimate piece for professional time trial competitions.

PRICES ON REQUEST







TRIATHLON SUIT D10419

CHARACTERISTICS

- Race tri suit unisex skinsuit.
- Polyamide woven mesh chain.
- Compressive effect.
- Printable XFACTOR fabric on the front.
- BFMF sensitive arm and collar.
- Water-repellent PROTECTRI G4 pad.
- Zipper on the back or front.
- Fast in water and UV heat exchange.



PAD CHARACTERISTICS

- Protected Tri G4 pad
- Sensibility / Density : 100kg / m3.
 - Q-Skin fabric.
- Anatomic, hygienic and anti-irritation structure.
- Bioceramic crystals wich help improving both body thermostatic temperature control and microcirculation encouraging the removal of excess lactic acid.

Ideal for the practice of triathlon this skinsuit accompanies you as well in the water as on the bike and during the race. Agility and constant comfort between land and sea for maximum performance.

PRICES ON REQUEST







THERMO TEAM TIGHTS D10155

CHARACTERISTICS

- Lombardia Lycra winter fabric.
- Elasticated ankle gripper.
- Stretchable anatomic straps.
- Printable inserts.
- Pad of choice

The Thermo Team tights, offers comfort and a perfect support for your winter rides. Preformed, its cut on the back and those of the bands on the sides are customizable.

PRICES ON REQUEST





THERMO PRO TIGHTS D10319

CHARACTERISTICS

- Roubaix Lycra winter fabric.
- Elasticated ankle gripper.
- Stretchable anatomic straps.
- Printable inserts.
- Pro 100 HD included.



The Thermo Pro tights offers comfort and a perfect support for your winter rides. Preformed, its cut on the back and those of the bands on the sides are customizable.

PRICES ON REQUEST





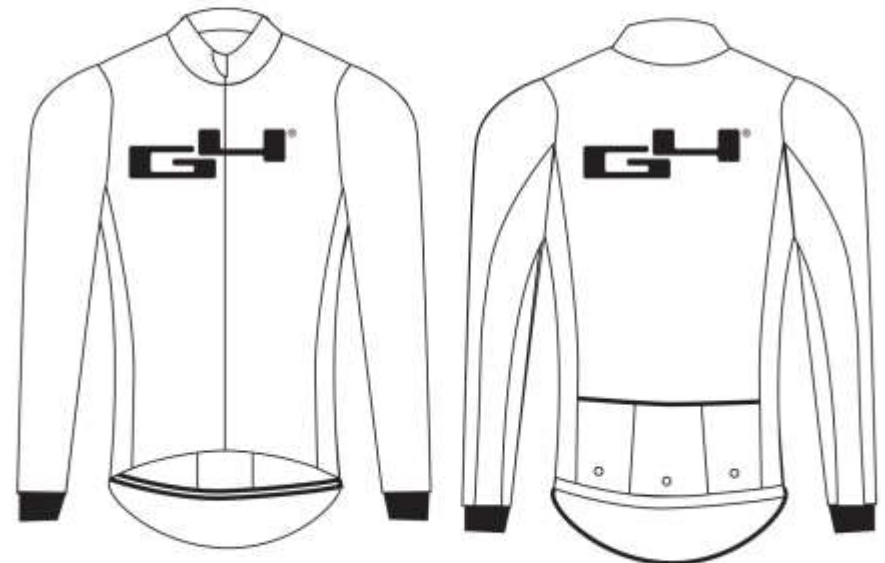
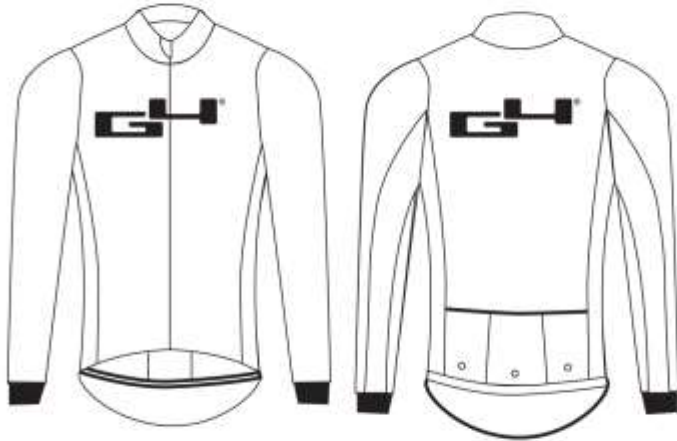
ALL SEASON RAIN JACKET D10316

CHARACTERISTICS

- Tissu sérigraphie Storm Shield.
- Long sleeve.
- Fitting form.
- Windproof and water-repellent fabric.
- Gripper at hem.
- Concealed full-zip.
- 3 rear pockets.

La veste de pluie toutes saisons est idéale pour vous accompagner tout au long de votre année cycliste. Ses caractéristiques lui permettent d'être un atout indispensable lors de vos sorties par mauvais temps.

PRICES ON REQUEST



TEAM WIND VEST D10157

CHARACTERISTICS

- Windproof vest.
- Form fitting.
- High collar.
- Front protective membrane.
- Breathable mesh on the back.
- Silicone gripper at hem.
- Lateral & vertical reflective piping.
- Flap to acces jersey pockets.
- Full-zip.



The Team sleeveless wind vest is ideal for wind protection during mid-season rides. This light and thin windbreaker is very practical because it fits easily in the back pockets of your jersey for weather changes!

PRICES ON REQUEST







TEAM PRO WIND VEST D10157

CHARACTERISTICS

- Windproof vest.
- Form fitting.
- High collar.
- Front protective teflon treated membrane.
- Breathable mesh on the back.
- Silicone gripper at hem.
- Lateral reflective piping.
- Full-zip.

The Pro sleeveless wind vest is ideal for changing weather conditions. This new Pro windbreaker with membrane fabric is tested in all conditions to give you the comfort and technicality necessary for your long rides!

PRICES ON REQUEST





FLASH RAIN JACKET D10337

CHARACTERISTICS

- All season rain jacket.
- Form fitting.
- High collar.
- Gabba impermeable and rain-proof mesh.
- Short sleeve.
- Printable sleeves.
- Logo impression transfer.
- Full-zip.
- Reflective pockets.

Developed for cold and wet conditions. The all-weather rain jacket protects your bust without overheating even at high temperatures. This jacket offers optimum protection in cool and dry weather thanks to its unique breathability.

PRICES ON REQUEST





FLASH+ RAIN JACKET D10158

CHARACTERISTICS

- All season rain jacket.
- Form fitting.
- High collar.
- Gabba impermeable and rain-proof mesh.
- Long sleeve.
- Printable sleeves.
- Logo impression transfer.
- Full-zip.
- Reflective pockets.

Developed for cold and wet conditions. The all-weather rain jacket protects your bust without overheating even at high temperatures. This jacket offers optimum protection in cool and dry weather thanks to its unique breathability.

PRICES ON REQUEST







THERMO JACKET D10154

CHARACTERISTICS

- Winter thermal jacket.
- Warm+ fabric.
- High collar.
- Protective teflon treated membrane fabric.
- G4 4,5cm silicone gripper at hem.
- 3 rear pockets.
- Reflective piping.
- Full-zip.

The winter cycling Thermo jacket is the winter jacket designed for riders looking for comfort, lightness, performance and a product adapted to extreme weather conditions to practice cycling during the winter season.

PRICES ON REQUEST







TEAM CAP D10164

CHARACTERISTICS

- Printable cap.
- DRYFIT.
- 4 colors.
- 65% polyester.
- 35% cotton.

PRICES ON REQUEST



TEAM SOCKS D10166 & D10321

CHARACTERISTICS

- 2 different lengths : **7cm** & **15cm**.
- Polyamide.
- Elasthanne.

PRICES ON REQUEST

TEAM

GLOVES

D10163



CHARACTERISTICS

- Breathable.
- Reinforced 3D mesh palm.
- Elastic trim.
- Easy to pull off.

PRO

GLOVES

D10320



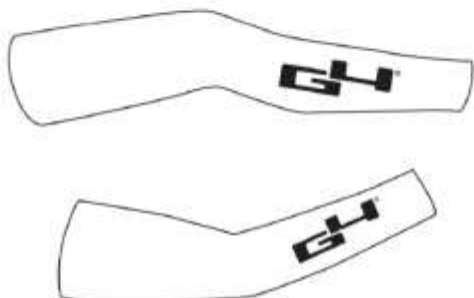
CHARACTERISTICS

- Time trial gloves.
- Long wrist.
- Breathable.
- Reinforced 3D mesh palm.
- Laser cut trim.
- Easy to pull off.

TEAM

WARMERS

D10322/4



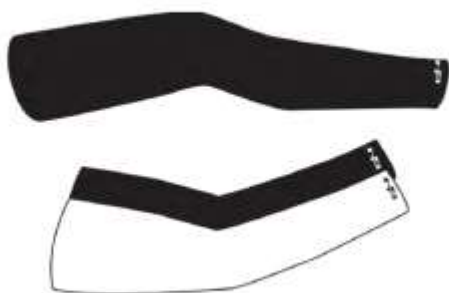
CHARACTERISTICS

- Polyester.
- Printable design.

PRO

WARMERS

D10323



CHARACTERISTICS

- Seamless.
- Black or white.

PRICES ON REQUEST

PRICES ON REQUEST

PAD

The search for cyclist comfort is our main concern. That's why we developed our own Pro 100 HD pad.

Hundreds of hours of research and testing have allowed us to obtain a pad that provides unparalleled comfort even after many hours of riding.

PRO 100 HD



CHARACTERISTICS

- Hypoallergenic microfiber.
- Sensibility / Density : 100kg / m3.
- Technology : Double honeycomb foam.

TEAM ACTIVE 85



CHARACTERISTICS

- Hypoallergenic microfiber.
- Sensibility / Density : 85kg / m3.
- Technology : Foam.

TEAM ACTIVE 90



CHARACTERISTICS

- Hypoallergenic microfiber.
- Sensibility / Density : 90kg / m3.
- Technology : 3 membranes, thermo foam.

GUIDE DES TAILLES SIZING CHART

MENSURATION / SIZING HOMME / MAN

XS S M L XL XXL

TORSE / CHEAST (A)	CM	86 - 89	90 - 93	94 - 97	98 - 101	102 - 105	106 - 109
	INCH	34 - 35	35 - 37	37 - 38,5	38,5 - 40	40 - 41	42 - 43

TAILLE / WAIST (B)	CM	80 - 83	84 - 87	88 - 91	92 - 95	96 - 99	100 - 103
	INCH	31,5 - 33	33 - 34	35 - 36	36 - 37,5	38 - 39	39 - 40,5

HANCHE / HIP (C)	CM	89 - 92	93 - 96	97 - 100	101 - 104	105 - 108	109 - 112
	INCH	35 - 36	36,5 - 38	38 - 39	40 - 41	41 - 42,5	43 - 45

MENSURATION / SIZING FEMME / WOMAN

XS S M L XL XXL

TORSE / CHEAST (A)	CM	78 - 81	82 - 85	86 - 89	90 - 93	94 - 97	98 - 101
	INCH	34 - 35	35 - 37	37 - 38,5	38,5 - 40	40 - 41	42 - 43

TAILLE / WAIST (B)	CM	61 - 64	65 - 68	69 - 72	73 - 76	77 - 80	81 - 84
	INCH	31,5 - 33	33 - 34	35 - 36	36 - 37,5	38 - 39	39 - 40,5

HANCHE / HIP (C)	CM	88 - 91	92 - 95	96 - 99	100 - 103	104 - 107	108 - 111
	INCH	35 - 36	36,5 - 38	38 - 39	40 - 41	41 - 42,5	43 - 45



EXTRA & CONDITIONS

EXTRAS

• Ruber print :	7€
• G4 Pro 100 HD pad :	22€
• Large 4,5cm elastic gripper :	3€
• Large elastic bib short 7cm :	3,5€
• Extra zipper pocket :	4€
• Reflective piping :	1,5€
• Reflective elastic pocket :	2€

SALES CONDITIONS

Prices given are illustrative and subject to change at any time. Prices are valid at the time of printing but G4 reserves the right to change said prices, at any time and without giving notice, if there are any additions, design changes and or any other changes imposed beyond its control. G4 reserves the right to apply the price applicable at the time of delivery.

Minimum waiting time for delivery is 6-8 weeks from the agreement of the design. Please note design and preparation costs are a minimum of €690 (excluding vat & Copyright) per 21- piece kit. All logos must be provided in vector format with pantone colours. The design may be reviewed and revised up to a maximum of three times for each and every project. Any subsequent changes will be charged an additional design cost based on our designer's hourly fees. These prices indicated do not include any additional costs related to order processing, transport or delivery.